



Q S X P E



THIS NEWSLETTER IS PUBLISHED BY THE
PORT ELIZABETH BRANCH OF THE SOUTH
AFRICAN RADIO LEAGUE.

P.O. BOX 10402
LINTON GRANGE
6015

05/68

Port Elizabeth Branch

NOTICE OF MONTHLY MEETING

MEMBERS ARE REMINDED THAT THE GENERAL MEETING OF THE BRANCH WILL
BE HELD ON FRIDAY 20th MAY 1988 AT ST. MARTINS CHURCH HALL,
KABEGA PARK, PORT ELIZABETH AT 8.15P.M

COMMITTEE

CHAIRMAN	BRIAN WELLER ZS2AB	30-3498
VICE CHAIRMAN:	LIONEL COOMBE-DAVIS ZS2DD	32-1770
SECRETARY:	MARGE WELLER ZS2OB	30-3498
TREASURER:	LYNNE CROTHALL ZS2MM	35-4671
SPECIAL/SOCIAL EVENTS:	BEAVAN GWILT ZS2RL	30-6968
AWARDS:	BILL HODGES ZR2AAN	51-2580
EDITOR QSN-PE:	MARGE WELLER ZS2OB	30-3498
MEMBERS:	DICK SCHONBORN ZS2RS	32-2111
LIBRARIAN:	COLIN ASHWELL ZS2AO	31-2471
(NON-COMMITTEE POST)		

BULLETIN ROSTER.

DATE	COMPILER	40M NET	2M NET
15 MAY	DICK ZS2RS	ZS2RS	ZS2AB
22 MAY	BRIAN ZS2AB	ZS2AB	ZS2RL
29 MAY	LIONEL ZS2DD	ZS2DD	ZR2AAN
5 JUNE	MARGE ZS2OB	ZS2AB	ZS2DD
12 JUNE	LYNNE ZS2MM	ZS2MM	ZS2RS

Sunday Bulletin Information

PRIMARY FREQUENCIES FOR BULLETINS AT APPROXIMATELY 08:40
H.F. 7098 KHz IN 40 MF TLE BAND
V.H.F. 145.650 MHz VIA TOWN REPEATER

BRANCH V.H.F. SERVICES PROVIDED

TOWN REPEATER (P.E. CENTRAL)	145,050 / 145,650 MHz
GRAHAMSTOWN REPEATER	145,150 / 145,750 MHz
LADY'S SLIPPER REPEATER	145,100 / 145,700 MHz
COCKSCOMB REPEATER	145,000 / 145,600 MHz
R.T.T.Y. BULLETIN BOARD	145,150 / 145,750 MHz
BEACON (C.W. ID ZS2PE)	144,910 MHz

****WE LIKE BEING YOUR BRANCH ****

THIS AND THAT

SUBSCRIPTIONS

AT THE 1988 LEAGUE ANNUAL GENERAL MEETING, THE SUBSCRIPTIONS WERE AMENDED AND ARE NOW AS FOLLOWS:

ORDINARY MEMBERS	R44
PENSIONERS	R23
INCAPACITATED	R23
STUDENTS	R26
SPOUSES	R20 RLS

MEMBERSHIP RENEWAL ACCOUNTS FOR THE 1988/89 PERIOD WILL BE POSTED WITH THE MAY EDITION OF RADIO ZS. PLEASE BE EXTREMELY CAREFUL WHEN OPENING YOUR ENVELOPE AS THE ACCOUNT WILL BE INSERTED IN THE MAGAZINE.

PORT ELIZABETH BRANCH MEMBERS.

IT HAS BEEN DECIDED ONCE AGAIN TO ALLOW YOU TO PAY YOUR SUBSCRIPTIONS IN UP TO 4 INSTALLMENTS. PLEASE ADVISE THE TREASURER WHEN PAYING WHETHER YOU WILL BE TAKING ADVANTAGE OF THIS OFFER. YOU WILL ONLY RECEIVE A RECEIPT WHEN YOUR SUBS ARE FULLY PAID UP.

RADIO ZS

TO GENERATE THE INTEREST OF BRANCHES AND THEIR MEMBERS IN THE COMPILATION OF RADIO ZS, A DECISION WAS TAKEN AT THE 1988 A.G.M. THAT BRANCHES WOULD UNDERTAKE TO SUBMIT ARTICLES AND TOPICS OF INTEREST CONCERNING THEIR REGION TO RADIO ZS. PLEASE SEND CONTRIBUTIONS TO YOUR BRANCH SECRETARY FOR FORWARDING TO HQ. EASTERN CAPE BRANCHES HAVE BEEN ALLOCATED THE MONTH OF AUGUST AND ALL ARTICLES MUST REACH HQ ONE MONTH PRIOR TO PUBLICATION. REMEMBER RADIO ZS IS YOUR MAGAZINE - MAKE A CONSTRUCTIVE AND MEANINGFUL CONTRIBUTION TO IT BY TIMEOUSLY WRITING AN ARTICLE OR SENDING IN A DESIGN, PHOTOGRAPH OR ANYTHING OF INTEREST FOR PUBLICATION. THIS IS THE IDEAL OPPORTUNITY TO LET THE OTHER BRANCHES KNOW WHAT, IF ANYTHING, IS HAPPENING IN YOUR REGION.

LEAGUE COUNCIL

CONGRATULATIONS TO THE NEW COUNCIL MEMBERS OF THE LEAGUE AND THANKS TO THE PAST COUNCIL FOR THEIR HARD WORK AND DEDICATION IN SPITE OF MANY BRICKBATS AND FEW BOUQUETS. HOW MANY OF US WOULD PUT SUCH A LOT OF HARD WORK INTO A HOBBY FOR THE BENEFIT OF SO MANY WHO ONLY CRITICISE AND CAN NEVER FIND THE TIME OR ENTHUSIASM TO GET INVOLVED THEMSELVES? AND REMEMBER, IT IS NOT ONLY THE LEAGUE MEMBERS WHO BENEFIT BY THIS WORK BUT ALL RADIO AMATEURS IN SOUTH AFRICA. WELL DONE, COUNCIL AND KEEP UP THE GOOD WORK.

CHAIRMAN'S TEA

THE CHAIRMAN'S TEA ON SUNDAY 24TH WAS ATTENDED BY OVER 30 MEMBERS AND FAMILIES AND IT SEEMS A GOOD TIME WAS HAD BY ALL. THIS WAS A GOOD OPPORTUNITY TO GET TOGETHER JUST FOR A CHAT AND MANY THANKS ARE DUE TO THE LADIES WHO HELPED WITH THE EATS AND THE WASHING UP. HOPEFULLY WE WILL SEE MORE OF YOU NEXT TIME ROUND.

BOOT SALE

AT THE BOOT SALE LAST MONTH, WE RAISED R220 TOWARDS BRANCH FUNDS AS A RESULT OF THE SALE OF COMPONENTS. THANKS TO THOSE WHO HELPED, AND DON'T FORGET THERE WILL BE A FLEA MARKET SOMETIME SOON.

MINUTES OF GENERAL MEETING OF THE FORT ELIZABETH BRANCH OF THE SOUTH AFRICAN RADIO LEAGUE, HELD AT ST. MARTIN'S CHURCH, FORT ELIZABETH ON FRIDAY 15TH APRIL, 1988.

PRESENT: 22 MEMBERS AND VISITORS.

APOLOGIES: ZS2s AJ, RT, AAS, DT, MG, DD, RG.

THE CHAIRMAN EXTENDED A WARM WELCOME TO ALL, ESPECIALLY OUR GUEST SPEAKER TOM BROWN, IO AL ZS2U THE CHAIRMAN OF THE ALGOA BRANCH, TO JULIAN S83M FROM UMTATA, BUDDY ZS2CA AND THE LADIES.

ONCE AGAIN, THE MEMBERS WERE ASKED TO STAND IN SILENCE FOR A FEW MOMENTS IN RESPECT FOR ANOTHER MEMBER CLIFF WICKHAM ZS2AP, WHO WENT SILENT KEY VERY SUDDENLY. BRIAN SAID THAT WE WOULD ALL MISS CLIFF VERY MUCH.

MINUTES: THE MINUTES OF THE GENERAL MEETING HELD 18TH MARCH, 1988, HAVING BEEN PUBLISHED AND CIRCULATED IN OSX-FE WERE TAKEN AS READ, PROPOSED BY BILL ZR2AA AND SECONDED BY BILL ZS2BY.

ARISING: THE CHAIRMAN MENTIONED THAT ALL THE MOTIONS PUT TO THE LEAGUE A.G.M. WERE EITHER WITHDRAWN OR LOST, SO THE MEMBERS MUST NOW BE SATISFIED WITH THE CONSTITUTION. THE SUBS WOULD BE GOING UP BY R5 WHICH WAS NOT TOO BAD, AND MEMBERS WOULD AGAIN BE AFFORDED THE OPPORTUNITY OF PAYING THEIR SUBS IN INSTALMENTS. R4 OF THE INCREASE WAS TO BE USED FOR RADIO ZS AND R1 FOR THE BRANCH FUNDS.

FINANCE: THE TREASURER REPORTED THAT THE POSITION STOOD AS FOLLOWS:

BALANCE IN SAVINGS ACCOUNT	R731.16
EXPANDING RATE CERTIFICATE	R1500.00
FIXED DEPOSIT	R2072.98
TOTAL	R4304.14

WE HAD RECEIVED A DONATION FROM THE RADIO CONTROL FLYERS ASSOCIATION AND AFTER TRAVELLING EXPENSES HAD BEEN PAID, THE BRANCH RECEIVED R32.

THE CHAIRMAN MENTIONED THAT RADIO COMMS HAD BEEN USED ON ALL FOUR DAYS ALTHOUGH WE WERE ORIGINALLY ONLY ASKED FOR TWO DAYS AND HE EXTENDED MANY THANKS TO COLIN ZS2AD, LYNN ZS2MM AND MARLENE ZR2DD FOR THEIR HARD WORK.

GENERAL: (1) MEMBERS WERE REMINDED OF THE BOOT SALE TO BE HELD AT PICK 'N' PAY ON SATURDAY 30TH AT 1P.M. COMPONENTS WOULD BE SOLD.

(2) ON SUNDAY 24TH, MEMBERS AND THEIR FAMILIES WERE INVITED TO THE CHAIRMAN'S TEA TO BE HELD AT ST. MARTIN'S CHURCH. THIS WAS FREE AND GAMES WOULD BE PROVIDED FOR THE CHILDREN.

(3) THE LIBRARY WOULD BE MOVED BACK TO THE HALL AND WOULD BE INSTALLED IN THE HALL ITSELF. THIS WOULD ENCOURAGE MORE USE OF THE FACILITY. THE MOVING WOULD BE DONE WHEN BILL ZS2BY WAS ABLE TO LEND US HIS BAKKIE.

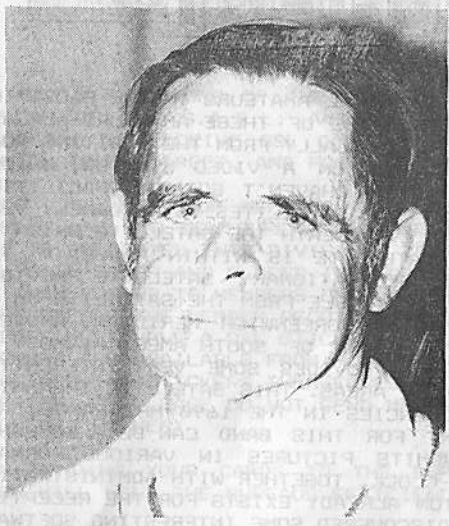
(4) BEAVAN ZS2RL SAID THAT HE HAD A R1000 RECEIVER FOR SALE.

THE BUSINESS OF THE MEETING WAS CONCLUDED AND TEA WAS TAKEN. THEREAFTER A VERY INTERESTING TALK ON BRAAI-ING, PARTICULARLY IN THE FIELD OF COMPETITIONS WAS GIVEN BY TOM BROWN, A PREVIOUS WINNER OF COMPETITIONS AND ALSO A JUDGE. MEMBERS WERE KEPT AMUSED BY HIS MANY STORIES.

AT THIS STAGE, TREVOR ZS2AE TOOK THE FLOOR AND SPOKE ABOUT PLANS FOR THE LINKING OF REPEATERS. HE ASKED AL ZS2U TO SPEAK TO THE MEMBERS IN REGARD TO THE PLANS OF THE ALGOA BRANCH IN THIS RESPECT AND AFTER DISCUSSION ON THE PROS AND CONS, IT WAS DECIDED TO FORM A COMMITTEE MADE UP OF MEMBERS OF BOTH BRANCHES TO DECIDE ON FUTURE PLANS. AL WAS THANKED FOR HIS ATTENDANCE AND MEMBERS WOULD BE KEPT INFORMED AS TO FURTHER DEVELOPMENTS.

SGD: B.A. WELLER ZS2AB
CHAIRMAN

SGD: M.T. WELLER ZS2OB
SECRETARY



WHO'S

WHO?

LIONEL ZS2DD

LIONEL COOMBE-DAVIS, ZS2DD WAS BORN AND GREW UP IN PORT ELIZABETH. HE ATTENDED VARIOUS JUNIOR SCHOOLS AND OBTAINED HIS SENIOR EDUCATION AT THE GREY HIGH SCHOOL AND RUSSELL ROAD TECHNICAL COLLEGE. LIONEL THEN SPENT A FIVE-YEAR APPRENTICESHIP IN A FOUNDRY, THREE YEARS AT A GRINDING WHEEL MANUFACTURING COMPANY, A FURTHER FIVE YEARS AT THE FOUNDRY, BUT RUNNING THE METALLURGICAL LABORATORY. HE LATER JOINED A GLASS COMPANY IN THE DEVELOPMENT LABORATORY AND THEN MOVED TO THE INSTRUMENT DEPARTMENT OF THE SAME COMPANY, WHERE HE STILL WORKS.

LIONEL WAS INTERESTED IN RADIO AND ELECTRONICS FROM HIS EARLIEST YEARS HAVING GROWN UP WITH AMATEUR RADIO AS HIS FATHER, COOMBE ZS2D WAS FIRST LICENSED IN 1919. LIONEL OBTAINED HIS OWN LICENCE IN 1957 AND OPERATED MOSTLY ON 160 AND 6 METERS. HE ENJOYED OPERATING AT MOTOR RACES AND RALLIES AS A PORTABLE STATION USING HOME-BREW EQUIPMENT AND IS STILL CONSISTENTLY INVOLVED IN RALLIES UNDERTAKEN BY THE BRANCH AND CAN BE HEARD OPERATING MOSTLY THE BASE STATIONS.

HIS MAIN INTERESTS AT THE MOMENT ARE DIGITAL COMMUNICATIONS, SATELLITES AND VHF OPERATIONS. HE ALSO ENJOYS CONSTRUCTING PROJECTS TO USE IN THE SHACK AND IS VERY KEEN ON THE USE OF COMPUTERS RELATED TO SATELLITES AND AMATEUR RADIO. HE OPERATED A RTTY STATION ON 20 METERS FOR A FEW YEARS AND WORKED SOME RTTY DX. HE STILL HAS THE RTTY STATION BUT HAS BECOME MORE INTERESTED IN THE PACKET RADIO MODE AND HAS KEPT BUSY WORKING LOCAL AND SEVERAL DX STATIONS USING THIS MODE. HE STILL ENJOYS CW OPERATION AND PREFERS TO HAVE "CHATS" TO STATIONS ON CW OR SSB RATHER THAN JUST AN EXCHANGE OF REPORTS.

HIS OTHER INTEREST IS ASTRONOMY AND AS HIS WIFE DORIS IS A VERY KEEN BIRD-WATCHER AND MEMBER OF THE BIRD SOCIETY, LIONEL OFTEN GOES ALONG TO WATCH THE "BIRDS"!

HE HAS BEEN A MEMBER OF THE S.A. RADIO LEAGUE SINCE 1958 AND HAS SERVED ON THE COMMITTEE OF THE PORT ELIZABETH BRANCH AT VARIOUS TIMES AND AT PRESENT IS VICE-CHAIRMAN. HE WAS ALSO SECRETARY OF THE CONTEST COMMITTEE OF THE LEAGUE WHEN IT WAS RUN BY THE PORT ELIZABETH BRANCH. IN THE LATE 1960s, LIONEL CARRIED OUT NUMEROUS TESTS WITH MIKE ZS2FM ON 6 AND 2 METERS AROUND THE EASTERN CAPE AND HAD SEVERAL CONTACTS ON 6 METERS WITH LINCOLN ZS2BZ IN KINGWILLIAMSTOWN, WILLIE ZS2OW IN KOMGHA AND THE LATE STAN ZS2CC IN STUTTERHEIM, AND ALSO A FEW 2 METER CONTACTS WITH THE ABOVE STATIONS. LIONEL IS ALWAYS READY TO HELP OUT AT BRANCH FUNCTIONS SUCH AS J.O.T.A, HOBBIES FAIRS, FIELD DAYS, CONTESTS AND CAN BE RELIED UPON TO GIVE A HELPING HAND WHENEVER NECESSARY.

WEFAX PROJECT?

THERE IS CONSIDERABLE INTEREST AMONGST LOCAL AMATEURS IN THE FACSIMILE TRANSMISSIONS FROM WEATHER SATELLITES. SOME OF THESE AMATEURS ALREADY HAVE A MEANS OF STORING SUCH PICTURES, USUALLY FROM THE ORBITING NOAA SATELLITES, AND DISPLAYING THE PICTURES ON A VIDEO MONITOR, WHILST OTHERS WOULD VERY MUCH LIKE TO DO SO BUT HAVEN'T GOT THE FACILITIES REQUIRED. THE COVERAGE FROM THE ORBITING SATELLITES IS NATURALLY VERY LIMITED, BEING ONLY THE AREA IMMEDIATELY BENEATH THE SATELLITE WHICH IS OBVIOUSLY ONLY AVAILABLE WHEN THE SATELLITE IS WITHIN RANGE OF THE RECEIVING STATION. THE METEOSAT 2 GEOSTATIONARY SATELLITE PROVIDES PICTURES OF THE ENTIRE EARTH DISC AS VISIBLE FROM THE SATELLITE WHICH IS SITUATED ABOVE THE EQUATOR, OVER THE GREENWICH MERIDIAN, AND CAN THEREFORE "SEE" THE WHOLE OF AFRICA, PART OF SOUTH AMERICA, MOST OF EUROPE, THE BRITISH ISLES, ETC., AND PROVIDED SOME VERY INTERESTING PICTURES OF THE CLOUD COVER OVER THESE AREAS. THIS SATELLITE TRANSMITS IN THE MICROWAVE REGION ON TWO FREQUENCIES IN THE 1490 MHZ RANGE, AND SETTING UP GOOD RECEIVING EQUIPMENT FOR THIS BAND CAN BE A SOMEWHAT DAUNTING PROJECT. METEOSAT 2 TRANSMITS PICTURES IN VARIOUS FORMATS EVERY FOUR MINUTES ALMOST ROUND-THE-CLOCK, TOGETHER WITH ADMINISTRATIVE MESSAGES AND TEST-PATTERNS. A STATION ALREADY EXISTS FOR THE RECEPTION OF MET 2, AND RECENTLY ANDRE ZS2BK DISCOVERED SOME INTERESTING SOFTWARE FOR THE IBM-COMPATIBLE PC WHICH WILL DISPLAY SUCH PICTURES IN VARIOUS MAGNIFICATIONS, IN USER-SELECTABLE COLOURS, ALLOWING DISK-STORAGE AND HARD-COPY PRINTOUT OF THESE PICTURES. AS THE NUMBER OF IBM-COMPATIBLE PCs IN USE BY LOCAL AMATEURS IS INCREASING STEADILY, I FELT THAT IT MIGHT BE OF INTEREST TO SET UP A SYSTEM WHEREBY THE MET 2 SIGNALS WOULD BE RELAYED ONTO 2 METRES, PROBABLY USING THE PRESENT RTTY MAILBOX TRANSMITTER ON ITS SIMPLEX FREQUENCY OF 145.350 MHZ FOR USE BY THOSE WITH FRAME-STORE EQUIPMENT, AND THOSE WHO COULD USE THEIR PCs.

I FOLLOWED UP THE SOURCE OF THE PC SOFTWARE AND WAS PROVIDED WITH THE INFORMATION FOR THE VIDEO INTERFACE TO THE PC. UNFORTUNATELY THE INTERFACE REQUIRED A DEMODULATED VIDEO SIGNAL AND NOT AUDIO DIRECT FROM THE RECEIVER OUTPUT, SO I HAVE ADDED A VIDEO DEMODULATOR SECTION WHICH WILL ENABLE USERS TO CONNECT THE AUDIO OUTPUT FROM THEIR 2 METRE RECEIVER DIRECTLY INTO THE INTERFACE WHICH PLUGS INTO THE GAMES PORT OF THE PC. IF THERE IS SUFFICIENT INTEREST IN THIS PROJECT, I WILL GENERATE A PRINTED-CIRCUIT BOARD FOR THE INTERFACE, AND POSSIBLY MAKE KITS AVAILABLE TOGETHER WITH THE SOFTWARE (WHICH CAME FREE, YOU CAN HAVE IT FREE). THE INTERFACE IS QUITE STRAIGHTFORWARD BUT REQUIRES PLUS AND MINUS 12 VOLTS AS WELL AS PLUS 5 VOLTS (WHICH IS AVAILABLE FROM THE PC GAMES SOCKET) SO I WILL INVESTIGATE THE GENERATION OF THE \pm 12 VOLTS ON THE INTERFACE AS WELL, SO THAT NO EXTERNAL POWER SUPPLY IS NEEDED. IF YOU ARE INTERESTED IN THIS PROJECT, PLEASE LET ME KNOW, AND HOPEFULLY WE WILL BE ABLE TO GET SOMETHING GOING.
DE BRIAN ZS2AB.



Instant Printing

9 ST. PATRICK'S ROAD
PORT ELIZABETH
6001



TELEPHONE 22614

**FOR ALL YOUR COMMERCIAL PRINTING REQUIREMENTS
TRY US FOR YOUR QSL CARDS!**

HOW THE QSL BUREAU FUNCTIONS

THE BASIC FUNCTIONS OF THE QSL BUREAU ARE TO RECEIVE QSL CARDS FROM MEMBERS OF THE S.A.R.L. AND TO SEND THEM TO QSL BUREAUX AROUND THE WORLD AND TO RECEIVE QSL CARDS FROM QSL BUREAUX AROUND THE WORLD OR FROM AMATEURS DIRECT, AND POST THEM TO MEMBERS OF THE S.A.R.L.

CARDS RECEIVED FROM MEMBERS ARE SORTED INTO COUNTRIES AND POSTED BULK SURFACE MAIL TO QSL BUREAUX AROUND THE WORLD ONCE A MONTH. QSL CARDS HAVE TO BE SORTED INTO DIVISIONS Z51 TO Z56. THEN THEY ARE SORTED INTO CALL SIGN ORDER AND PLACED INTO DRAWERS UNDER THE MEMBERS NAME. CARDS ARE THEN POSTED TO MEMBERS ONCE A MONTH. EACH QSL CARD IS HANDLED FIVE TIMES BEFORE THE MEMBER RECEIVES IT. CARDS RECEIVED AT THE BUREAU FROM MEMBERS MUST HAVE A QSL STICKER ATTACHED TO THEM, ONE PER CARD. THE STICKERS ARE AVAILABLE FROM H.O. AT R3,00 FOR 50. MEMBERS ARE REQUESTED TO ATTACH THE STICKERS THEMSELVES AS BUREAU PERSONNEL ARE ALREADY FULLY OCCUPIED. PLEASE DO NOT SEND MONEY WITH YOUR CARDS IF YOU ARE OUT OF STICKERS, EITHER!

WHEN SENDING YOUR CARDS TO THE BUREAU REMEMBER THE FOLLOWING POINTS WHICH WILL HELP THE BUREAU'S EFFICIENCY:

1. SEND YOUR CARDS TO THE BUREAU ON A MONTHLY BASIS.
2. WRITE THE CALL SIGN AND, IF NECESSARY, THE QSL MANAGERS CALL SIGN CLEARLY ON THE CARD.
3. MAKE CERTAIN THAT YOU HAVE ATTACHED THE QSL STICKER.
4. SORT YOUR CARDS INTO COUNTRY, ALPHABETICAL AND DIVISION ORDER BEFORE MAILING TO THE BUREAU. PLEASE NOTE THAT ALL AMERICAN CARDS CAN BE GROUPED TOGETHER INTO DIVISION ORDER.
5. ENVELOPES WHICH ARE EITHER TOO THICK OR OF A NON-STANDARD SIZE REQUIRE A HIGHER POSTAGE RATE. (CHECK AT YOUR POST OFFICE).
6. WHEN WORKING RARE DX STATIONS MAKE SURE THAT YOU GET THE RIGHT QSL INFORMATION, QSL MANAGER OR QSL BUREAU. REMEMBER THAT WE DO NOT QSL DIRECT TO AMATEURS IN FOREIGN COUNTRIES.
7. WHEN NEXT PRINTING YOUR QSL CARDS, PLEASE NOTE: THEY MUST CONFORM TO THE I.A.R.U.'S SPECIFIED SIZE 90mm X 140mm. (OVERSIZED CARDS CAUSE POSTAGE PROBLEMS).
8. PLEASE INFORM THE BUREAU IF YOU CHANGE YOUR ADDRESS.
9. IF YOU DON'T QSL, PLEASE SAY SO WHEN YOU END YOUR QSO, YOU'LL SAVE AMATEURS AND BUREAUX AROUND THE WORLD, TIME, MONEY AND LABOUR.
10. IF YOU DO A LOT OF DX-ING AND GENERATE A LOT OF INCOMING CARDS, A LARGE SELF-ADDRESSED ENVELOPE SENT TO THE BUREAU WILL HELP TO SPEED UP THE DELIVERY.

THERE IS ONLY ONE LADY WORKING AT THE QSL BUREAU, SO REMEMBER THAT THESE TEN POINTS WILL HELP MAKE YOUR BUREAU ONE OF THE FASTEST AND MOST EFFICIENT IN THE WORLD.

DAVE DUELL ZS1DL - QSL MANAGER.

NOTE FROM THE EDITOR.

QSL STICKERS AND LOG BOOKS ARE AVAILABLE FROM THE TREASURER OF THE BRANCH AT GENERAL MEETINGS. THE I.A.R.U. REGION 2 ADOPTED A RECOMMENDATION THAT ALL AMATEURS IN THE REGION USE THE CONVENTION OF EXPRESSING DATES ON QSL CARDS WITH SETS OF TWO-DIGIT NUMBERS IN THE ORDER OF YEAR/MONTH/DATE, AS FOR EXAMPLE 88/05/01. IT HAS BEEN PROPOSED THAT REGION 1 AND 3 USE THIS METHOD SO THAT IT CAN BE ADOPTED WORLDWIDE. NEXT TIME YOU HAVE YOUR QSL CARDS PRINTED, PLEASE ADD THE WORDS EITHER ON THE FRONT (IF YOU USE A ONE-SIDED CARD) OR ON THE BACK - "THIS CARD IS VALID FOR THE PORT ELIZABETH BRANCH AWARD". MANY THANKS AND HAPPY DX-ING AND QSL-ING.

SERIOUS VIRUS APPEARS IN PUBLIC DOMAIN SOFTWARE.

SOMEONE IN THE UNITED STATES WITH A TOTALLY WARPED SENSE OF HUMOUR HAS INTRODUCED A PARTICULARLY NASTY VIRUS INTO SOME PUBLIC DOMAIN SOFTWARE. THIS VIRUS IS INCLUDED IN THE COMMAND.COM FILE OF SELF-BOOTING DISKS WHERE IT SITS QUIETLY. WHEN THE DISK IS BOOTED FOR THE FOURTH TIME, ALL MAGNETIC MEDIA ON THE SYSTEM IS TOTALLY TRASHED, WITH THE RESULT THAT ALL DATA ON THE DISK WILL BE IRRECOVERABLY LOST. HARD DISKS WILL REQUIRE A LOW LEVEL FORMAT BEFORE THEY CAN BE USED AGAIN.

FURTHERMORE, DURING THE FIRST BOOT OPERATION, THE INFECTED DISK REPLACES EVERY COMMAND.COM FILE IT CAN FIND ON THE SYSTEM WITH A COPY OF ITSELF, WITH THE RESULT THAT THE VIRUS SPREADS LIKE WILDFIRE. ONE UNIVERSITY IN THE STATES HAS HAD TO REPLACE JUST ABOUT EVERY PIECE OF SOFTWARE ON THE CAMPUS - AT CONSIDERABLE EXPENSE AND INCONVENIENCE.

CODE IN THE COMMAND.COM FILE HAS BEEN REPLACED WITH THE VIRUS, SO AN INFECTED COMMAND.COM FILE CANNOT BE DETECTED BY THE DIFFERENCE IN THE FILE LENGTH.

HOWEVER, THERE ARE WAYS TO GUARD AGAINST TERMINAL ATTACKS OF THE VIRUS. DISCARD ANY COMMAND.COM FILE THAT IS DOWNLOADED WITH PUBLIC DOMAIN SOFTWARE AND REPLACE IT WITH YOUR OWN COMMAND.COM FILE. SOMETIMES THIS IS IMPOSSIBLE (FOR EXAMPLE, BECAUSE OF DIFFERENT VERSIONS OF DOS) THEN ALWAYS WRITE PROTECT ONE DISK ON THE SYSTEM WHEN YOU FIRST BOOT THE SYSTEM FROM THE DOWNLOADED DISK. IF THE SCREEN SHOWS "WRITE ERROR - DISK WRITE PROTECTED" MESSAGE, YOU HAVE AN INFECTED DISK ON THE SYSTEM. IMMEDIATELY REPLACE ALL COMMAND.COM FILES ON THE SYSTEM.

IF YOU COME ACROSS INFECTED SOFTWARE, PLEASE CONTACT THE EDITOR, IT NEWS P.O. BOX 28504, KENSINGTON, 2101. PHONE (011)224-2490 (BUSINESS) OR (011)615-5472 (HOME) WITH DETAILS OF THE NAME OF THE SOFTWARE AND WHERE YOU OBTAINED IT.

BEAUFORT WIND SCALE

WITH WHAT SEEMS TO BE A GREAT CHANGE IN THE WEATHER LATELY, AND THE FACT THAT WE SEEM TO BE HAVING MORE AND STRONGER WINDS THAN IS NORMAL AT THIS TIME OF THE YEAR, WE THOUGHT THIS LITTLE TABLE MIGHT BE OF INTEREST WHEN YOU HEAR OR SEE WEATHER FORECASTS AND TO KNOW WHEN YOU SHOULD TURN YOUR BEAM INTO THE WIND OR EVEN TIE IT DOWN! THANKS TO LIONEL ZS2DD FOR THIS INFORMATION AND TO BRIAN ZS2AB FOR THE ADDITIONAL KNOTS FIGURES.

NO.	DESCRIPTION.	WIND STRENGTH.		
		MILES P.H.	FM/HOUR	KNOTS
0	CALM	LESS THAN 1	1.5	0 - 1
1	LIGHT AIR	1 - 3	1.5 - 5	1 - 3
2	LIGHT BREEZE	4 - 7	6 - 11	4 - 6
3	GENTLE BREEZE	8 - 12	12 - 19	7 - 10
4	MODERATE BREEZE	13 - 18	20 - 29	11 - 16
5	FRESH BREEZE	19 - 24	30 - 39	17 - 21
6	STRONG BREEZE	25 - 31	40 - 50	22 - 27
7	MODERATE GALE	32 - 38	51 - 61	28 - 33
8	FRESH GALE	39 - 46	62 - 74	34 - 40
9	STRONG GALE	47 - 54	75 - 87	41 - 47
10	WHOLE GALE	55 - 63	88 - 101	48 - 55
11	STORM	64 - 75	102 - 120	56 - 65
12	HURRICANE	OVER 75	120	65+

HOT VERSUS COLD

UNTIL RECENTLY IT WAS NOT POSSIBLE TO HEAT OBJECTS WITHOUT THE USE OF A DIRECT FLAME. HOWEVER, ALONG CAME THE DISCOVERY OF ELECTRICITY AND ALL OF A SUDDEN IT WAS NOW POSSIBLE TO HEAT WATER ON DEMAND AND OF COURSE, AS WAS DONE BEFORE TO STORE IT IN RELATIVELY WELL INSULATED TANKS. THIS METHOD OF WATER HEATING WAS AND HAS ALWAYS BEEN EFFICIENT - ALL THE ENERGY GIVEN OFF BY THE ELECTRIC ELEMENT IS DONE SO IN THE WATER. ONCE AGAIN THOUGH, WE ARE BAFLED BY SCIENCE. IN FACT, EVERYTHING IS HOT IN NATURE AND OF COURSE, BECAUSE OF THE SUN. REAL COLD, WE ARE TOLD, IS -273 DEGREES C WHICH MEANS THAT AT +20 C, WE ACTUALLY MEAN +293 KELVIN.

THIS IS RATHER INTERESTING BECAUSE IT MEANS THAT IF WE CAN MAKE ONE OBJECT COLDER AT NORMAL ENVIRONMENTAL TEMPERATURE WE WILL BE EXTRACTING REAL HEAT FROM IT AND THIS CAN BE USED TO DIRECTLY HEAT OTHER ITEMS.

TAKE FOR EXAMPLE, THE REFRIGERATOR WHICH HAS A SMALL COOLING/HEATING SYSTEM ALREADY BUILT IN AS STANDARD. IT SIMPLY TAKES A LIQUID AND SUBJECTS IT TO A VACUUM. THIS IN TURN CAUSES THE LIQUID TO BOIL AND VAPOURISE WHICH REQUIRES THE ADDITION OF HEAT. IF THE AVAILABLE HEAT IS LIMITED, THEN THE VESSEL HOLDING IT COOLS DOWN IN TEMPERATURE. THE GAS PASSES VIA THE VACUUM PUMP WHICH COMPRESSES IT AND USING AN EXTERNAL RADIATOR SURROUNDED BY AMBIENT TEMPERATURE AIR COOLS DOWN UNTIL IT AGAIN FORMS A LIQUID FROM WHERE IT IS AGAIN RECYCLED. THE COOLING OF THE REFRIGERANT FLUID RESULTS IN THE HEATING OF THE AIR.

ALSO BECOMING MORE COMMON TODAY IS THE HEAT PUMP MACHINE. THIS NAME DESCRIBES THE ACTION OF THE UNIT WHICH BASICALLY EXTRACTS HEAT FROM THE SURROUNDING ENVIRONMENT - ORIGINALLY FROM THE SUN - AND 'PUMPS' IT INTO ANOTHER MEDIUM, E.G. WATER IN AN INSULATED TANK. IN FACT, THIS IS SO EFFICIENT ESPECIALLY AT OUR HIGHVELD CLIMATES WHERE AS MUCH AS 70% OF THE ENERGY NEEDED TO HEAT WATER, FOR EXAMPLE, IS EXTRACTED FROM THE AIR AROUND US AND FORTUNATELY IS FREE.

AS STRANGE AS IT MAY SEEM, THERE HAS NOT YET IN HISTORY BEEN A TAX ON THE USE OF HEAT FROM THE SUN. LIGHT WAS TAXED IN THE MIDDLE AGES, WATER IS TAXED TODAY. CONSUMABLE ENERGY SOURCES SUCH AS COAL AND OIL ARE TAXED AND THE USE OF ELECTRO-MAGNETIC RADIATION (RADIO WAVES) IS TAXED TOO.

WHY, THEREFORE, IS THERE SO LITTLE INTEREST IN HARNESSING THE WASTE ENERGY FROM THE SUN?

PERHAPS THE PROBLEM IS THE NEGATIVE ECONOMIC FACTORS INFLUENCING THE SUPPLY OF OTHER SOURCES WHERE IT BECOMES CHEAPER AND CHEAPER PER UNIT TO USE MORE AND MORE VOLUME OF TAXABLE ENERGY SOURCE. WHY, TOO, HAS THE SUN'S ENERGY NOT BEEN TAXED YOU MAY ASK? IT DEFINITELY CAN BE MEASURED AND/OR ESTIMATED AS EASILY AS THE VALUE OF A PIECE OF LAND (RATES AND TAXES). IT IS AS NECESSARY AS THE WATER WE FEED TO OUR PLANTS. WITHOUT IT WE WOULD SURELY FREEZE. THE ONLY REASON, THEREFORE, CAN BE THAT IT CANNOT BY ANY MAN-MADE MEANS BE CUT OFF TO A PARTICULAR AREA.

WITH THE FAST INTRODUCTION OF SUN-ORIGINATING ENERGY ABSORPTION SYSTEMS WE CAN BE PRETTY WELL ASSURED THAT SOON ENOUGH, USE OF THE SUN WILL BE TAXED TOO. ONE ONLY HAS TO LOOK AT THE LACK OF ENCOURAGEMENT BY THE AUTHORITIES IN THE USE OF SOLAR HEATING AND THE COSTLY DISTRIBUTION OF DOMESTIC POWER TO SEE THAT THE TREND HAS ALREADY STARTED. ALREADY ON OUR BORDERS WE FIND THE INTRODUCTION OF 'FREE' HYDRO-ELECTRIC SOURCES WHICH HAVE FORCED THE COST OF ELECTRICITY TO THESE NATIONS UP TO ASTRONOMICAL LEVELS WHILE THE LOANS TO INSTALL THEM ARE BEING REPAID.

TO SUM UP, IT HAS BEEN SAID THAT WE ALSO PAY FOR ENERGY TWICE. ONCE TO MAKE USE OF IT AND ONCE TO GET RID OF IT.

(ACKNOWLEDGEMENTS TO FARRELL SEGAL ZS&RW.)

YL CHATTER

A Page for the Ladies.

CATERING FOR SHY MAIDENS.

YOU CAN'T RESIST THE LATEST ELECTRONIC GADGET FROM THAT OLD STANDBY FOR HILARIOUSLY UNLIKELY PRODUCTS, JAPAN.

SO THE QUESTION FOR TODAY IS WHY HAS MITSUBUSHI ELECTRIC BEEN ABLE TO SELL 100 000 OF ITS SECHER UNDERWEAR DRYERS - SMALL ELECTRONIC CANNISTERS FOR DRYING YOUR SMALLS. IS IT BECAUSE SLINKY SLINKIES ARE SO EXPENSIVE IN JAPAN THAT LADIES CAN ONLY AFFORD ONE PAIR? OR IS IT BECAUSE JAPANESE GIRLS ARE TOO COY TO HANG ALL THEIR INTIMATE GARMENTS OUT ON THE WASHING LINE? NO, BECAUSE IT'S SO COLD IN WINTER IN JAPAN THAT MOTHER'S GOOD ADVICE ABOUT PUTTING ON WARM UNDERWEAR IS TAKEN LITERALLY.

AND THE GADGETEERS HAVEN'T STOPPED THERE. ANOTHER ELECTRONIC GIZMO TO HIT THE SPOT WAS ACTUALLY DEVELOPED WITH A VIEW TO SAVING WATER. IT SEEMS THAT WHEN Ms NIPPON VISITS THE SMALLEST ROOM, SHE IMMEDIATELY FLUSHES THE LOOS TO MASK ANY EMBARRASSING NOISES AS SHE GOES ABOUT HER BUSINESS. SO NOW YOU CAN INVEST IN A DELIGHTFUL DEVICE THAT ELECTRONICALLY GENERATES THE SOUND OF RUSHING WATER AS LONG AS THE DOOR IS LOCKED!

(FROM 'COMPUTING S.A.')

BRAAI RECIPE.

USING A WHOLE BEEF FILLET, INSERT FRESH GARLIC CLOVES LIBERALLY, EVERY 60mm. MAKE A MIXTURE OF SALT, BLACK PEPPER AND OREGANUM AND RUB THIS WELL INTO THE MEAT. COOK OVER STEADY EVEN COALS FOR APPROXIMATELY HALF AN HOUR, SEALING IT WELL ON ALL SIDES FIRST. SERVE WITH ONE STARCH SALAD, ONE GREEN OR MIXED SALAD AND POT BREAD OR ROLLS, OR TRY THE UNUSUAL AND VERY TASTY RECIPE BELOW.

BAKED SWEET POTATO AND APPLE.

SERVES 4 - 6.

500g SWEET POTATOES, 2 GRANNY SMITH APPLES, PEELED AND CORED.
2ml GROUND CINNAMON, 125ml UNSWEETENED APPLE JUICE.

PEEL SWEET POTATOES AND SLICE THINLY. SLICE APPLES THINLY. IN A GREASED SHALLOW OVENPROOF CASSEROLE DISH, PLACE A LAYER OF SWEET POTATO SLICES FOLLOWED BY A LAYER OF APPLES. SPRINKLE APPLES WITH CINNAMON. REPEAT LAYERS UNTIL ALL HAVE BEEN USED. POUR APPLE JUICE INTO CASSEROLE DISH AND BAKE AT 180c FOR 25 MINUTES. SERVE HOT GARNISHED WITH SPRIGS OF MINT. AS A VARIATION, USE BUTTERNUT SQUASH INSTEAD OF SWEET POTATO.

SOME USEFUL TIPS.

(1) TO KEEP PINS FROM RUSTING, SHAKE A LITTLE TALCUM POWDER INTO A NEWLY OPENED TIN AND YOUR PINS WILL NEVER RUST OR MARK MATERIAL EVEN IF YOU LEAVE THE TIN OPEN.

(2) ANOTHER USE FOR TALCUM POWDER - TO GET RID OF SMALL ANTS, SHAKE TALCUM POWDER LIGHTLY ON THEIR USUAL TRACKS.

(3) IF YOU HAVE PETS OR SMALL CHILDREN AROUND AND DON'T WANT TO USE POISON POWDER OR PELLETS TO GET RID OF SNAILS, MIX 1 TABLESPOON OF EPSOM SALTS AND 1 TABLESPOON OF AMMONIA TO FIVE LITRES OF WATER. APPLY WHERE SNAILS ARE TROUBLESOME. ALSO, SAWDUST SPRINKLED AROUND SEEDLINGS WILL PROTECT THEM FROM SNAILS.

DO YOU HAVE ANY GOOD HINTS OR TIPS? PLEASE PASS THEM ON TO THE EDITOR.

DOES YOUR FAMILY LIKE POTATO CHIPS? THEN READ THE ARTICLE IN LAST MONTH'S OSX ON HOW A COMPUTER MAKES POTATO CHIPS WITHOUT EVEN HAVING TO PEEL THE POTATOES!

TECHNICAL TOPICS.

ANTENNA MATCHING AND S.W.R.

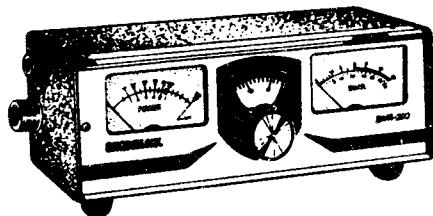
WITH ANY TRANSMITTER IT IS IMPORTANT TO MATCH IT TO THE ANTENNA, OTHERWISE SOME OF THE POWER WILL NOT BE EFFECTIVELY TRANSMITTED BUT INSTEAD REFLECTED BACK INTO THE TRANSMITTER. THE S.W.R. (STANDING WAVE RATIO) METER PROVIDES A MEANS OF MEASURING THE "MATCH"

USING THE S.W.R. METER.

THE METER SHOULD BE CONNECTED INTO THE COAX CABLE FROM THE TRANSMITTER TO THE ANTENNA AS CLOSE TO THE ANTENNA AS POSSIBLE FOR AN ACCURATE READING AND FOLLOWING THE STEP-BY-STEP PROCEDURE HERE YOU WILL BE SURPRISED HOW EASY IT IS:

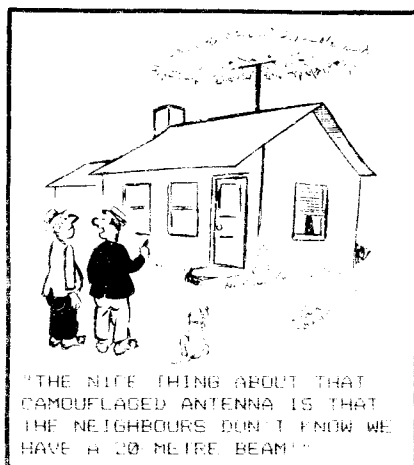
- 1) IF YOU ARE USING A SINGLE-METER INSTRUMENT, SWITCH TO READ "FORWARD".
- 2) TURN THE "SENSITIVITY" CONTROL TO MINIMUM AND THEN PRESS THE TRANSMIT BUTTON (ON SSB RIGS, GO TO TUNE POSITION TO GET POWER OUTPUT). QUICKLY ADJUST THE SENSITIVITY CONTROL TO OBTAIN A FULL-SCALE READING ON THE METER, OR THE "FORWARD" METER ON INSTRUMENTS WITH TWO METERS.
- 3) NOW SWITCH TO "REVERSE" OR "REFLECTED" AND THE S.W.R. WILL BE INDICATED ON THE METER SCALE. TWO METER INSTRUMENTS WILL SHOW THE S.W.R. ON THE "REFLECTED" METER.
- 4) THE TABLE BELOW WILL TELL YOU WHETHER TO BE CONCERNED OR NOT. IT IS ALMOST IMPOSSIBLE TO HAVE A PERFECTLY-MATCHED ANTENNA SYSTEM AND AN S.W.R. OF 1:1 IS ALMOST UNATTAINABLE. HERE'S WHAT HAPPENS TO YOUR TRANSMITTER POWER FOR VARIOUS S.W.R.'s - PLUS COMMENTS:

S.W.R.	% PWR TO ANT.	COMMENTS.
1:1	100	PERFECT
1.05:1	99.93	EXCELLENT
1.1:1	99.78	EXCELLENT
1.2:1	99	VERY GOOD
1.5:1	96	GOOD
2:1	88	IMPROVE IF POSSIBLE
2.5:1	82	IMPROVE IF POSSIBLE
3:1	75	WORTH FIXING.



THANKS TO DUDLEY Z52AW FOR SUPPLYING THE ORIGINAL ARTICLE.

TIME FOR A LAUGH





PETERSEN & SMITHIES

THE Engine Rebuilders
Specialists in Veteran car engines.

3 HANCOCK STREET, NORTH END

☎ **041-543669/0**

ASK FOR LEO SMITHIES

HENROSE PRODUCTS (PTY) LTD (F.D.M.S) BPK

MANUFACTURERS OF PLASTIC BAGS
PRODUCERS OF FRUIT JUICES
"ORANG-U-TANG"
AND "LEKKA LIKS" FROZEN SUCKERS

VERVAARDIGERS VAN PLASTIEKSAKKE
VERVAARDIGERS VAN VRUGTE SAPPE
"ORANG-U-TANG" EN
"LEKKA LIKS" VERVRIESTE YSBLOKKE

TEL. 545470

5-7 EDGAR LANE

NORTH END

PORT ELIZABETH, 6001

S.A. ELEKTRONIKA

*THE SOUTH AFRICAN HOBBYIST'S
BILINGUAL MONTHLY MAGAZINE.*

S.A. Elektronika is aimed at the beginner as well as the advanced amateur, and is an ideal reference source for your apprentices, as well as a source of simple practical projects, designed using components freely available on the South-African market. S.A. Elektronika is available from most electronic component shops.



E.P. MUFFLERS

EXHAUST FITTING AND PIPE BENDING
SPECIALISTS AND MANUFACTURERS

ALSO:
TOWBARS
BATTERIES
SHOCK
ABSORBERS



MILD STEEL
FULLY
GUARANTEED

STAINLESS
STEEL
LIFETIME
GUARANTEE

ALSO IN
GRAHAMSTOWN
(0461) **28448**
5 HOWSE STREET

545420

29 EMBASSY STREET, NORTH END, P.E.

BAMBOO SNACKS

For delicious Chinese Take-aways
in the Western Suburbs.

OLD CAPE ROAD
KABEGA PARK, PORT ELIZABETH

PHONE 30-4390

Express Number plates & 'SIGNS'

INC
FLEKTI-PLATE

REG. 61-26748-01

Tel 54-2834 / 54-1501 / 54-1652

23a De Villiers St

PO Box 2587

Port Elizabeth

North End 6056